

Sitavig[®]

(ACYCLOVIR)
Buccal Tablets | 50 mg

3 71403 04902 7

HIGHLIGHTS OF PRESCRIBING INFORMATION

These highlights do not include all the information needed to use SITAVIG safely and effectively. See full prescribing information for SITAVIG.

SITAVIG (acyclovir) buccal tablets
Initial U.S. Approval: 1982

INDICATIONS AND USAGE

SITAVIG is indicated for the treatment of recurrent herpes labialis (cold sores) in immunocompetent adults (1).

DOSAGE AND ADMINISTRATION

- Application of one SITAVIG 50 mg buccal tablet as a single dose to the upper gum (canine fossa) region (2.1).
- SITAVIG should be applied within one hour after the onset of prodromal symptoms and before the appearance of any signs of herpes labialis.
- Do not crush, chew, suck or swallow tablets (2.2).

DOSAGE FORMS AND STRENGTHS

50 mg buccal tablets (3).

CONTRAINDICATIONS

Known hypersensitivity to acyclovir, milk protein concentrate, or any other component of the product (4).

ADVERSE REACTIONS

Most common adverse reactions (≥1%) are: headache and application site pain (6.1).

To report SUSPECTED ADVERSE REACTIONS, contact EPI Health, LLC at 1-800-499-4468 or FDA at 1-800-FDA-1088 or www.fda.gov/medwatch.

DRUG INTERACTIONS

Due to the low dose and minimal systemic absorption of SITAVIG, drug interactions are unlikely (7).

USE IN SPECIFIC POPULATIONS

- Nursing Mothers: Caution should be exercised when administered to a nursing woman (8.3).

See 17 for PATIENT COUNSELING INFORMATION and FDA-Approved Patient Labeling

Revision date: 12/2017

FULL PRESCRIBING INFORMATION: CONTENTS*

1	INDICATIONS AND USAGE
2	DOSAGE AND ADMINISTRATION
	2.1 Basic Dosing Information
	2.2 Administration Instructions
3	DOSAGE FORMS AND STRENGTHS
4	CONTRAINDICATIONS
6	ADVERSE REACTIONS
	6.1 Clinical Trial Experience
7	DRUG INTERACTIONS
8	USE IN SPECIFIC POPULATIONS
	8.1 Pregnancy
	8.2 Labor and Delivery
	8.3 Nursing Mothers
	8.4 Pediatric Use
	8.5 Geriatric Use
	8.6 Immunocompromised Patients
10	OVERDOSAGE
11	DESCRIPTION
12	CLINICAL PHARMACOLOGY
	12.1 Mechanism of Action
	12.3 Pharmacokinetics
	12.4 Microbiology
13	NONCLINICAL TOXICOLOGY
	13.1 Carcinogenesis, Mutagenesis, Impairment of Fertility
14	CLINICAL STUDIES
16	HOW SUPPLIED/STORAGE AND HANDLING
17	PATIENT COUNSELING INFORMATION
	17.1 Instructions for Use
	17.2 Adverse Reactions

*Sections or subsections omitted from the full prescribing information are not listed.

FULL PRESCRIBING INFORMATION

1 INDICATIONS AND USAGE

SITAVIG is indicated for the treatment of recurrent herpes labialis (cold sores) in immunocompetent adults.

2 DOSAGE AND ADMINISTRATION

2.1 Basic Dosing Information

One SITAVIG 50 mg buccal tablet should be applied as a single dose to the upper gum region (canine fossa).

2.2 Administration Instructions

SITAVIG should be applied within one hour after the onset of prodromal symptoms and before the appearance of any signs of herpes labialis lesions. The tablet should be applied with a dry finger immediately after taking it out of the blister. The tablet should be placed to the upper gum just above the incisor tooth (canine fossa) and held in place with a slight pressure over the upper lip for 30 seconds to ensure adhesion. For comfort the rounded side should be placed to the upper gum, but either side of the tablet can be applied. Tablet should be applied on the same side of the mouth as the herpes labialis symptoms.

Once applied, SITAVIG stays in position and gradually dissolves during the day. [See *Clinical Pharmacology* (12.3)]. In addition,

- SITAVIG should not be crushed, chewed, sucked or swallowed.
- Food and drink can be taken normally when SITAVIG is in place. Avoid any situations which may interfere with adhesion of the tablet such as chewing gum, touching or pressing the tablet after placement, wearing upper dentures, and brushing teeth. If the teeth need to be cleaned while the tablet is in place, rinse the mouth gently. Drink plenty of liquids in the case of dry mouth.
- If SITAVIG does not adhere or falls off within the first 6 hours, the same tablet should be repositioned immediately. If the tablet cannot be repositioned, a new tablet should be placed.
- If SITAVIG is swallowed within the first 6 hours, the patient should drink a glass of water and a new tablet should be applied. [See *Patient Counseling Information* (17)].
- SITAVIG does not need to be reapplied if the tablet falls out or is swallowed after the first 6 hours

3 DOSAGE FORMS AND STRENGTHS

SITAVIG is a buccal tablet containing 50 mg of acyclovir. SITAVIG tablets are round, off-white tablets, with a rounded side and a flat side. The tablets are marked with an "AL21" on the flat side.

4 CONTRAINDICATIONS

SITAVIG is contraindicated in patients with known hypersensitivity (e.g., anaphylaxis) to acyclovir, milk protein concentrate, or any other component of the product.

6 ADVERSE REACTIONS

6.1 Clinical Trial Experience

Because clinical trials are conducted under widely varying conditions, adverse reaction rates observed in the clinical trials of a drug cannot be directly compared to rates in the clinical trials of another drug and may not reflect the rates observed in clinical practice.

The overall safety of SITAVIG was assessed in 378 adult subjects having at least 4 herpes labialis episodes the previous year.

One randomized, double-blind, placebo controlled trial was conducted in patients with recurrent herpes labialis (cold sores). In this trial, 378 HSV infected subjects used SITAVIG as a single dose, and 397 subjects used placebo.

Selected treatment emergent adverse events without regard to causality and reported in at least 1% of patients can be seen in Table 1.

Table 1 Selected Treatment Emergent Adverse Events reported in at least 1% of patients

Event	SITAVIG N = 378	Placebo N = 397
Nervous System Disorders		
Headache	3%	3%
Dizziness	1%	1%
Lethargy	1%	0
Gastrointestinal system Disorders		
Gingival Pain	1%	0.3%
Aphthous Stomatitis	1%	0
Administration Site Conditions		
Application Site Pain	1%	1%
Application Site Irritation	1%	0
Skin and Subcutaneous Disorders		
Erythema	1%	0.3%
Rash	1%	0.3%

The treatment emergent adverse events considered related to treatment that occurred in greater than or equal to 1% of patients included headache (1% SITAVIG vs. 2% placebo) and application site pain (1% both arms). There was no discontinuation of SITAVIG due to adverse drug reactions. Most treatment related adverse events were mild or moderate in severity. One report of headache from both treatment arms was classified as severe.

7 DRUG INTERACTIONS

No interaction studies have been performed with SITAVIG. Acyclovir is primarily eliminated unchanged in the urine via active tubular secretion. Drugs administered concomitantly that compete with tubular secretion may increase acyclovir plasma concentrations. However, due to the low dose and minimal systemic absorption of SITAVIG, systemic drug interactions are unlikely.

8 USE IN SPECIFIC POPULATIONS

8.1 Pregnancy

Pregnancy Category B

No studies with SITAVIG have been performed in pregnant women. Systemic exposure of acyclovir following buccal administration of SITAVIG is minimal. SITAVIG should be used during pregnancy only if the potential benefit outweighs the potential risk to the fetus.

There are no adequate and well-controlled studies of systemic acyclovir in pregnant women. A prospective epidemiologic registry of acyclovir use during pregnancy between 1984 and 1999 followed 749 pregnancies in women exposed to systemic acyclovir during the first trimester of pregnancy resulting in 756 outcomes. The occurrence rate of birth defects approximated that found in the general population. However, the size of the registry was insufficient to evaluate the risk for less common defects or to permit reliable or definitive conclusions regarding the safety of acyclovir in pregnant women and their developing fetuses.

Animal Data

Animal reproduction studies have not been conducted with SITAVIG. Acyclovir was not teratogenic in the mouse, rabbit or rat at exposures greatly in excess of human exposure.

8.2 Labor and Delivery

SITAVIG should not be administered during labor and delivery as there is no experience with SITAVIG.

8.3 Nursing Mothers

It is not known whether topically applied acyclovir is excreted in breast milk. Systemic exposure following buccal administration is minimal.

After oral administration of acyclovir, concentrations have been documented in breast milk in 2 women and ranged from 0.6 to 4.1 times the corresponding plasma levels. These concentrations would potentially expose the nursing infant to a dose of acyclovir up to 0.3 mg/kg/day.

There is no experience with SITAVIG in nursing mothers. SITAVIG should be administered to a nursing mother with caution.

8.4 Pediatric Use

Safety and effectiveness of SITAVIG in pediatric patients have not been established. The ability of pediatric patients to comply with the application instructions has not been evaluated. Use in younger children is not recommended due to potential risk of choking.

8.5 Geriatric Use

Clinical studies of SITAVIG did not include sufficient numbers of subjects aged 65 and over to determine whether they respond differently from younger subjects.

8.6 Immunocompromised Patients

The safety of SITAVIG has not been studied in immunocompromised subjects.

10 OVERDOSAGE

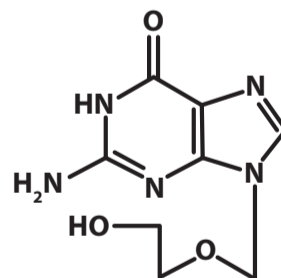
Acyclovir absorption and systemic exposure following application of SITAVIG are minimal. Overdose is therefore unlikely [see *Clinical Pharmacology* (12.3)]. Symptomatic and supportive care is the basis for management.

11 DESCRIPTION

SITAVIG (acyclovir) buccal tablet is applied topically to the gum and releases acyclovir as the buccal tablet gradually dissolves [see *Clinical Pharmacology* (12.3)].

Acyclovir is a synthetic purine nucleoside analogue active against herpes viruses. The chemical name of acyclovir is 2-amino-1,9-dihydro-9-[(2-hydroxyethoxy)methyl]-6H-purin-6-one; it has a molecular formula of C₈H₁₁N₅O₃ and a molecular weight of 225. The structural formula is shown in Figure 1.

Figure 1: Structural Formula of Acyclovir



Acyclovir drug substance is a white or almost white crystalline powder.

SITAVIG contains 50 mg of acyclovir, USP and the following inactive ingredients: hypromellose, USP; milk protein concentrate; sodium lauryl sulfate, NF; magnesium stearate, NF; microcrystalline cellulose, NF; povidone, USP; colloidal silicon dioxide, NF.

12 CLINICAL PHARMACOLOGY

12.1 Mechanism of Action

Acyclovir is an antiviral drug [see Microbiology (12.4)].

12.3 Pharmacokinetics

Absorption and Distribution

Salivary

Single dose application of SITAVIG containing 50 mg of acyclovir to the buccal mucosa in 12 healthy volunteers provided mean maximum salivary concentrations of 440 µg/mL 8 hours after application of the tablet. The pharmacokinetic parameters of acyclovir in the saliva of healthy volunteers are provided in Table 2.

Table 2: Pharmacokinetic (PK) Parameters of Acyclovir in Saliva Following Application of a Single SITAVIG 50 mg Tablet in Healthy Volunteers (N = 12)

Salivary PK Parameters (N = 12)	Mean ±SD (Min - Max)
AUC _{0-24h} (mcg.h/mL)	2900 ± 2400 (849 - 9450)
C _{max} (mcg/mL)	440 ± 241 (149 - 959)
T _{max} (hour)	7.95 ± 4.08 (3.07 - 18.05)

In the Phase 3 study, the levels of acyclovir in saliva were measured within 24 hours of SITAVIG application in 56 patients with recurrent herpes labialis (mean value 88.1 micrograms per mL) and were within the range of those observed in the PK study in healthy volunteers. In healthy volunteers, the median duration of buccal adhesion was 14 hours following application of a single SITAVIG 50 mg tablet.

Plasma

Plasma concentrations of acyclovir were measured in 12 healthy volunteers after a single-dose application of SITAVIG 50 mg buccal tablet. Acyclovir concentrations had a delayed appearance (undetectable at 5 hours) and were below the concentrations required for antiviral activity (range: 17.5 to 55.3 nanogram per mL).

Metabolism and Excretion

Acyclovir is metabolized to 9-[(carboxymethoxy)methyl]guanine (CMMG) and 8-hydroxy-acyclovir (8-OH-ACV) by oxidation and hydroxylation, and is primarily excreted unchanged by the kidneys.

Food Effect

There was no formal food effect study conducted with SITAVIG; however, in clinical studies patients were allowed to eat and drink while taking SITAVIG.

12.4 Microbiology

Mechanism of Action

Acyclovir is a synthetic purine nucleoside that is phosphorylated intracellularly by the viral encoded thymidine kinase (TK) of HSV into acyclovir monophosphate, a nucleotide analogue. The monophosphate is further converted into diphosphate by cellular guanylate kinase and into triphosphate by a number of cellular enzymes. In a biochemical reaction, acyclovir triphosphate inhibits replication of herpes viral DNA by competing with nucleotides for binding to the viral DNA polymerase and by incorporation into and termination of the growing viral DNA chain. The cellular thymidine kinase of normal, uninfected cells does not use acyclovir effectively as a substrate, hence toxicity to mammalian host cells is low.

Antiviral activity

The quantitative relationship between the cell culture susceptibility of herpes viruses to antivirals and the clinical response to therapy has not been established in humans, and virus sensitivity testing has not been standardized. Sensitivity testing results, expressed as the concentration of drug required to inhibit by 50% the growth of virus in cell culture (EC50), vary greatly depending upon a number of factors. Using plaque-reduction assays on Vero cells, the median EC50 value of acyclovir against clinical herpes virus isolates (subjects receiving placebo) was 1.3 µM (range: < 0.56 to 3.3 µM).

Drug Resistance

Resistance of HSV to acyclovir can result from qualitative and quantitative changes in the viral TK and/or DNA polymerase. Clinical isolates of HSV with reduced susceptibility to acyclovir have been recovered from immunocompromised subjects, especially with advanced HIV infection. While most of the acyclovir-resistant mutant isolates from immunocompromised subjects thus far have been found to be TK-deficient, other mutant isolates involving the viral TK gene (TK partial and TK altered) or DNA polymerase have been identified. TK-negative mutants may cause severe disease in infants and immunocompromised adults. The possibility of viral resistance to acyclovir should be considered in immunocompromised subjects who show poor clinical response during therapy.

13 NONCLINICAL TOXICOLOGY

13.1 Carcinogenesis, Mutagenesis, Impairment of Fertility

Systemic exposure following buccal administration of acyclovir is minimal. Results from previous studies of carcinogenesis, mutagenesis and fertility for acyclovir are not included in the full prescribing information for SITAVIG due to the minimal exposure that results from buccal administration. Information on these studies following systemic exposure is available in the full prescribing information for acyclovir products approved for oral and parenteral administration.

14 CLINICAL STUDIES

Study in Patients with Recurrent Herpes Labialis (cold sores)

The efficacy and safety of SITAVIG was evaluated in a randomized, double-blind, placebo-controlled, patient-initiated, multicenter trial comparing SITAVIG 50 mg administered as a single dose (n = 378) to placebo (n = 397) in patients with recurrent herpes labialis (cold sores). A total of 376 SITAVIG treated patients and 395 placebo treated patients were included in the Intent to Treat (ITT) efficacy population defined as all patients who took study treatment and who had a start date and time of treatment initiation recorded. The mean age was 41.0 years (range: 18-80 years) and the majority of patients were female (68.6%), and Caucasian (94.9%). All patients had at least 4 herpes episodes in the previous year of whom 68.4% had ≥ 5 episodes. Patients were instructed to initiate treatment within one hour after the onset of prodromal symptoms and before the appearance of any signs of herpes labialis lesions by applying the tablet to the buccal mucosa in the canine fossa. If the tablet was detached within the first 6 hours, subjects were instructed to reapply a tablet. The mean and median durations of the recurrent herpes labialis episode (ITT population, n=771) were approximately half a day shorter in patients treated with SITAVIG compared with patients treated with placebo.

16 HOW SUPPLIED/STORAGE AND HANDLING

SITAVIG 50 mg buccal tablets are supplied as off-white tablets containing 50 mg of acyclovir. SITAVIG tablets have a rounded side and a flat side. SITAVIG tablets are packaged in blisters (NDC 68712-049-02).

SITAVIG should be stored at 20 to 25°C (68 to 77°F) [see USP controlled room temperature]; excursions between 15 and 30°C (59-86°F) permitted at room temperature. Protect from moisture, and keep out of reach of children.

17 PATIENT COUNSELING INFORMATION

Patients should be informed that SITAVIG is not a cure for cold sores. See FDA-approved patient labeling (Patient Information and Instructions for Use).

17.1 Instructions for Use

Read the Instructions for Use that comes with SITAVIG before you start using it. Talk to your doctor or pharmacist if you have any questions.

Important:

SITAVIG should be applied to the area of the upper gum above the incisor tooth.

SITAVIG tablets should not be crushed, sucked, chewed or swallowed.

If it comes out before 6 hours have gone by, reapply it. If this does not work then a new tablet should be applied. It should not be applied to the inside of the lip or cheek.

- Tablet should be applied on the same side of the mouth as the herpes labialis symptoms.
- Do not remove SITAVIG if it sticks to your upper gum. If SITAVIG does not stick or falls off of your upper gum within the first 6 hours that you apply it, place it back onto your upper gum. If it still does not stick, replace it with a new SITAVIG tablet.
- Do not re-apply SITAVIG if it falls out or you swallow it after it has been in place 6 hours or longer.
- If you swallow SITAVIG within the first 6 hours of applying it, drink a glass of water and place a new SITAVIG tablet onto your upper gum.

17.2 Adverse Reactions

Patients may experience adverse reactions including headache, and application site pain.

Patient Information SITAVIG (SIT-a-vig) (acyclovir) buccal tablets

What is SITAVIG?

- SITAVIG is a prescription medicine used to treat cold sores (herpes labialis) in adults with normal immune systems.
- It is not known if SITAVIG is safe and effective in children.

Who should not use SITAVIG?

Do not use SITAVIG if you are allergic to:

- acyclovir or any of the ingredients in SITAVIG. See the end of this leaflet for a complete list of ingredients in SITAVIG.
- milk protein concentrate

Before using SITAVIG, tell your healthcare provider about all of your medical conditions, including if you:

- are pregnant or plan to become pregnant. It is not known if SITAVIG will harm your unborn baby.
- are breastfeeding or plan to breastfeed. It is not known if SITAVIG passes into your breast milk.
- Tell your healthcare provider about all the medicines you take, including prescription or over-the-counter medicines, vitamins, or herbal supplements.

How should I use SITAVIG?

See the detailed Instructions for Use for information about how to use SITAVIG.

- Use SITAVIG exactly as your healthcare provider tells you to use it.
- Use SITAVIG within 1 hour after you have the first symptom of a cold sore, such as itching, redness, burning, or tingling, and before a cold sore appears.
- You may eat and drink while using SITAVIG.
- Do not crush, chew, suck, or swallow SITAVIG tablets.
- SITAVIG will slowly dissolve over time while in your mouth and should be left in place.
- Gently rinse your mouth with water to clean your teeth while SITAVIG is in place.
- Drink more liquids if your mouth becomes dry while using SITAVIG.

What should I avoid while using SITAVIG?

You should avoid activities that may prevent SITAVIG from sticking to your gum, including: touching or pressing SITAVIG after you apply it, wearing upper dentures, chewing gum, and brushing your teeth during the treatment day.

What are the possible side effects of SITAVIG?

The most common side effects of SITAVIG include: headache and pain where SITAVIG is applied.

These are not all the possible side effects of SITAVIG. Call your doctor for medical advice about side effects. You may report side effects to FDA at 1-800-FDA-1088.

How should I store SITAVIG?

- Store SITAVIG between 68°F to 77°F (20°C to 25°C). Keep SITAVIG tablets dry.

Keep SITAVIG and all medicines out of the reach of children.

General information about the safe and effective use of SITAVIG

Medicines are sometimes prescribed for purposes other than those listed in a Patient Information leaflet. Do not use SITAVIG for a condition for which it was not prescribed. Do not give SITAVIG to other people, even if they have the same symptoms that you have. It may harm them. You can ask your pharmacist or healthcare provider for information about SITAVIG that is written for health professionals.

What are the ingredients in SITAVIG?

Active ingredient: acyclovir

Inactive ingredients: hypromellose, milk protein concentrate, sodium lauryl sulfate, magnesium stearate, microcrystalline cellulose, povidone, colloidal silicon dioxide. Manufactured By: Farméa, 10 rue Bouché Thomas, ZAC d'orgemont, 49 000 Angers - France
For more information call 1-800-499-4468.

This Patient Information has been approved by the U.S. Food and Drug Administration. Issue: April/2013

Instructions for Use SITAVIG (SIT-a-vig) (acyclovir) buccal tablets

Read the Instructions for Use that comes with SITAVIG before you start using it. Talk to your healthcare provider or pharmacist if you have any questions.

Important:

- SITAVIG should be applied within 1 hour after you have the first symptom of a cold sore, such as itching, redness, burning, or tingling, and before a cold sore appears.
- SITAVIG should be applied on the same side of your mouth as the cold sore symptoms.
- SITAVIG should be applied to your upper gum, just above your incisor tooth.
- SITAVIG should not be applied to the inside of your lip or your cheek.
- If SITAVIG does not stick to your upper gum or falls off of your upper gum within the first 6 hours after you apply it, the same tablet should be placed back onto your upper gum right away. If this SITAVIG tablet does not stay in place, apply another SITAVIG tablet to your upper gum.
- Do not re-apply SITAVIG if it falls out or you swallow it after it has been in place 6 hours or longer.
- If you swallow SITAVIG within the first 6 hours of applying it, drink a glass of water and place a new SITAVIG tablet onto your upper gum.

How to apply SITAVIG:

Step 1: Before you apply SITAVIG, find the area on your upper gum, just above either the left or the right incisor. The incisor tooth is the tooth just to the right or left of your two front teeth (See Figure A). This is where you should apply SITAVIG.

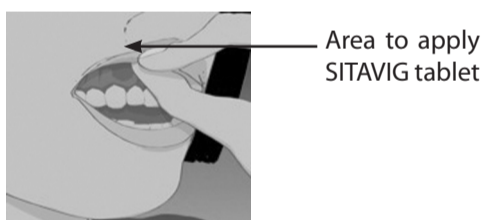


Figure A

Step 2: Peel back the cover of the blister pack. Take 1 SITAVIG out of the blister pack. When removed from the blister pack, SITAVIG must be used right away. SITAVIG is round on one side and flat on the other side (See Figure B).

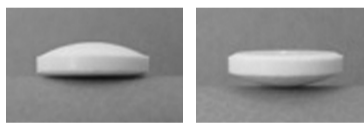


Figure B

Step 3: Place the flat side of SITAVIG on your dry fingertip. Apply the round side of SITAVIG to your upper gum (See Figure C). The flat side will be facing the inside of your lip.



Figure C

Step 4: Hold SITAVIG in place by applying a slight pressure with your finger on the outside of your upper lip, over the area where SITAVIG is placed, for 30 seconds. This will help SITAVIG stick to your gum (See Figure D).

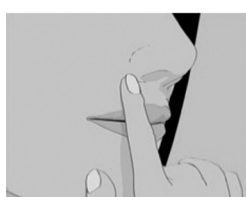


Figure D

Step 5: Leave the SITAVIG tablet in place until it dissolves.

This Instructions for Use has been approved by the U.S. Food and Drug Administration.

Manufactured By:
Farméa
10 rue Bouché Thomas
ZAC d'orgemont
49 000 Angers - France

Distributed By:
EPI Health, LLC
Charleston, SC 29403
1-800-499-4468
www.epihealth.com
www.sitavig.com

U.S. Pat. No.: 8,592,434 ; 8,747,896 and 8,791,127.

©EPI Health, LLC

Revision date: 12/2017

EPIHEALTH
Advancing Dermatology

SIT-PH1217

FARMEA

Designation: NOTICE SITAVIG 50MG 2CP US V17 (Etats-Unis)
ACH 22932 - A



VERSION

DATE

Technical information

Processed by:

V1-1

17/11/2017

Format à plat 200 x 630 mm
Format plié 200 x 315 mm



KOM EURO CONCEPT

2 rue Claude Chappe
69370 Saint-Didier au Mont d'Or
04 30 22 06 61

V1-2

24/11/2017

V1-3

08/12/2017

V1-4

08/12/2017

V1-5

20/12/2017

Colors: **Black U**